

*'Kia ita!'*

---

*Te Taura Whiri i te Reo Māori*

MĀORI LANGUAGE COMMISSION



**TE TAUAKI KORONGA  
MŌ NGĀ MAHI KIA TUTUKI 2015/16**

---

**TE TAURA WHIRI I TE REO MĀORI**

## Ngā Kōrero o Roto

He kupu nā ngā Kaiwhiri .....	4
WĀHANGA TUATAHI – TE TAUAKI KORONGA MŌ NGĀ MAHI KIA TUTUKI (Hāunga te taha pūtea).....	5
Rohenga Pūtea: Whakawhanaketanga Māori me te karangatanga tutukinga .....	5
Ngā arotahinga matua mō te tau 2015/16 me te 2016/17 .....	5
Ngā mahi whāiti ka kawea ā te 2015/16 me te 2016/17 .....	6
Te anga whakaatu i ngā mahi kia tutuki.....	8
Ngā hoahoa .....	8
Ka pēhea tā mātou ine i te tutuki o ngā mahi? .....	11
Ngā tohu ine i ngā putanga .....	11
Ngā tohu ine SPE .....	11
Ngā mahi rangahau, kaupapa-here.....	11
Te whakawhanake i te reo .....	17
Te toha pūtea ki te hapori .....	23
Te mahi tahi ki ngā rangapū reo Māori.....	27
WĀHANGA TUARUA – TE TAUAKI KORONGA MŌ NGĀ MAHI KIA TUTUKI (Taha Pūtea) .....	31
Te Tauaki Noho Haepapa.....	31
He kupu whakataki .....	32
Te tauaki whakapae tūāpapa tāpua .....	32
He hinonga tāpae pūrongo.....	32
Te tauaki kaupapa-here kaute tāpua .....	32
Te pūnaha ine .....	32
Ngā whiwhinga moni.....	33
Ngā kaupapa-here kaute whāiti .....	33
Ngā hua taha pūtea .....	33
Ngā hua taha rawa.....	33
Te hekenga wāriu .....	33
Ngā hua whakawairua .....	33

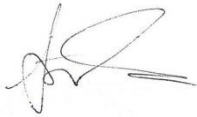
Ngā hanga whakanao pūtea.....	34
Te tāke hokohoko.....	34
Ngā paihere.....	34
Ngā rīhi.....	34
Te tāketanga.....	34
Ngā tāpuitanga mō ngā whakawhiwhinga kaimahi.....	34
Te tauaki kapewhiti.....	34
Te tohanga utu.....	35
Te paearu mō ngā utu arorangi.....	35
Te paearu mō ngā utu kāore i arorangi.....	35
Ngā whakarerekētanga ki ngā kaupapa-here kaute.....	35
Ngā tauaki pūtea.....	36
Te tauaki matapae o ngā whiwhinga moni whānui.....	36
Te tauaki matapae mō te tūnga pūtea.....	38
Te tauaki nekeneke tūtanga.....	39
Te tauaki kapewhiti.....	40

## He kupu nā ngā Kaiwhiri

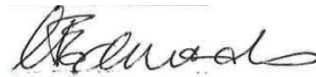
He koanga ngākau e tāpaea atu nei tā mātou Tauaki Koronga mō ngā Mahi kia Tutuki (SPE) mō te tau 2015/16. Kei tēnei tuhinga e whakaahuatia ana:

- ngā mahi e mea ana Te Taura Whiri i te Reo Māori ki te kawē ake ā te tau pūtea 2015/16
- te āhua o tā mātou ine i te tutukinga o ngā mahi
- ngā hua matapae – taha pūtea, taha mahi – e whakakoro ana mātou kia eke i te roanga o te tau

Ka āta pūrongotia te SPE ki te Pūrongo ā-Tau.



Te Awanuiārangi Black  
Toihau Kairiwhi  
Te Poari o Te Taura Whiri i te Reo Māori  
24 Pipiri 2015



Katarina Edmonds  
Kaiwhiri  
Te Poari o Te Taura Whiri i te Reo Māori  
24 Pipiri 2015

# WĀHANGA TUATAHI – TE TAUAKI KORONGA MŌ NGĀ MAHI KIA TUTUKI (Hāunga te taha pūtea)

## Rohenga Pūtea: Whakawhanaketanga Māori me te karangatanga tutukinga

E takea mai ana te pūtea a Te Taura Whiri i te Reo Māori i te Rohenga Pūtea: Whakawhanaketanga Māori, i raro i ēnei karangatanga mahi e rua:

1. **Te Whakatairangatanga o te Reo Māori** – mō ngā kaupapa whakahauora, whakapakari ake i te reo Māori i Aotearoa, tae atu ki ngā mahi whakaikeike i te mana o te reo
2. **Ngā Rangahautanga Reo Māori** – mō ngā kaupapa rangahau, whakawhanake e tautoko ana i ngā mahi whakahauora ake i te reo Māori.

Ko te takune, kia haere te pūtea ki te whakatutuki i ngā wawata e whai ake nei kua tohua mō te Rohenga Pūtea: Whakawhanaketanga Māori:<sup>1</sup>

- e rauhī ana, e whāomoomo ana, e whakatupu ana ngā iwi Māori i ō rātou reo, i ā rātou taonga, i ō rātou mātauranga, me ā rātou tikanga
- e whakatupu ana, e whāomoomo ana, e whakawhanake ana ngā iwi Māori i ā rātou rawa
- e mau haere ana i ngā tāngata Māori ngā pūkenga me ngā mātauranga.

Kua whakaaetia kia noho te karangatanga Rangahautanga Reo Māori ki waho<sup>2</sup> o ngā mahi pūrongorongo o te mutunga o te tau, i raro i te wāhanga 15D(2)(b)(iii) o te Ture Pūtea Tūmatanui 1989. Nō reira, kua komokomohia noatia atu he kōrero mōna ki ngā kōrero mō ērā atu kawenga ka kawea e Te Taura Whiri i te Reo Māori i tēnei tau.

## Ngā arotahinga matua mō te tau 2015/16 me te 2016/17

I te Tauaki Whakamaunga Atu (SOI) o te tau 2014–18 i tohua ko ēnei kawenga e whai ake nei hei arotahinga matua mō taua rima tau:

- te mahi kia rere ngātahi tō mātou ahunga rautaki, ā mātou mahi me te Rautaki Reo Māori 2014 (MLS 2014), ā:
  - kia takoto he tātaitanga waitohu i te hauora o te reo Māori
  - kia takoto he anga aroturuki, pūrongorongo mō ngā hōtaka reo Māori e whakahaerehia ana i te rāngai kāwanatanga
  - kia takoto he kōrero i ngā pūrongo mō te tātaitanga me te anga
- te whakatinana i ngā taunakitanga mō te tūtohu rangahau reo Māori ā-motu
- te whiri me te tiaki i ngā taura mahi tahi ki ētahi atu rangapū reo Māori
- te whakatinana i tētahi anga aromātai tara ā-whare hei ine i te pānga o ā mātou ratonga ki te tupu me te hauora o te reo Māori me te poipoinga o ngā reo ā-iwi

<sup>1</sup> Rohenga Pūtea: Whakawhanaketanga Māori, *The Estimates of Appropriations 2014/15 - Māori, other populations and cultural sector*, B5, Vol B, page 158

<sup>2</sup> I ngā kōrero ka tāia mō te Rohenga Pūtea: Whakawhanaketanga Māori.

- te whakapai ake i te horanga o ā mātou ratonga ki te kiritaki, mā te hāpai ake i ngā hangarau hou
- te mahi kia pai ake tā mātou taki i ngā kōrero mō te tutuki haere o ngā mahi
- te hāpai tonu i ā mātou mahi mātāmua, arā, ko te toha pūtea ki te hapori, te whakawhanake reo, ngā mahi kaupapa-here, rangahau, me te mahi tahi ki ngā rangapū reo Māori.

### **Ngā mahi whāiti ka kawea ā te 2015/16 me te 2016/17**

Hei ēnei tau e rua ka mahi tonu mātou ki te whakakotahi i te ahunga o tā mātou rautaki, ā mātou kawenga, te MLS 2014 me ētahi atu whāinga tōmua a te kāwanatanga, mā te tāpiri i ēnei mahi e whai ake nei ki ā mātou mahi kua roa e kawea ana.

#### **Ngā mahi rangahau, kaupapa-here**

1. Te whakatinana i ngā taunakitanga i hua ake i te rangahau i kawea mō *Te tūtohu rangahau reo Māori ā-motu mō te whakaoranga ake o te reo Māori, i hua ake i te kōrero tahi ki ngā rangapū reo Māori.*
2. Te whakahaere i ngā kaupapa auroa e whā i ara ake i te tūāmahi tuatahi o te pūtahi rangahau, whakawhanake, ā oti noa. Koia ēnei:
  - *Te ine i te hauora o te reo Māori i ngā kāinga me ngā hapori*
  - *Te ine i ngā painga o te reo me ngā tikanga Māori ki te ōhanga o Aotearoa*
  - *Te aromātai i te pānga o ngā wānanga whakapakari reo me te wāhi ki ēnei i ngā koringa whakaora reo a ngā hapori*
  - te whakatū hōtaka karahipi, i runga i te āhua o ngā whāinga tōmua ka tautohua e ngā rangapū i te 1 i runga ake nei – he mea kawē mai i te tau 2014/15.
3. Te whakaputa i te tauira tuatahi o te tātaitanga waitohu reo.
4. Te whakaputa i te pūrongo ā-tau tuatahi mō te whakamahere me te pūrongorongo i ngā hōtaka reo Māori puta noa i te rāngai kāwanatanga.
5. Te mahi tahi ki ētahi atu whakahaere kāwanatanga e whai pānga mai ana ki te reo ki te ārohi, ki te whakamana, ki te kawē i ētahi arotakenga putuputu o ngā kaupapa me ngā ratonga whakapakari reo.
6. Te ārohi, te whakarite, te whakahaere uiuinga e kitea ai ngā waiaro o ngā tāngata o Aotearoa ki te reo Māori, me te pūrongorongo i ngā kōrero ka puta ake.
7. Te whakaputa tonu i ngā tānga hou mō ngā mahi rangahau, kaupapa-here ki te whare pukapuka whitihiko.

#### **Te toha pūtea ki te hapori**

8. Te whakatinana i tētahi pūnaha whakahaere tohanga pūtea hou, tae atu ki ngā whakaritenga mō te tono me te tiaki kirimana rā runga i te ipurangi.
9. Te ārohi me te whakatinana i tētahi hōtaka tuku pūtea ruarangi tonu (mō Mā te Reo me te Community Based Language Initiatives – CBLI), ka ārahina ki ngā paearu ka puta ake i te rangahautanga o te rangapū reo Māori (te 1 i runga ake nei, i ngā kōrero mō ngā mahi rangahau, kaupapa-here).
10. Te arotake kapo noa i ngā kaupapa e whakahaeretia ana e Te Ātaarangi (He Kāinga Kōrerorero, He Kura Whānau Reo).

11. Te whakatinana i te anga e pai ake ai te aromātai i te pānga o ngā kaupapa tohatoha pūtea ki te hāpori ki ngā tāngata o aua hāpori ka uru ki aua kaupapa.

### **Te whakawhanake i te reo**

12. Te arotake i te hanga o Toi Reo Māori, te huarahi e whakangungua ai, e whakamātautauria ai ngā kaiwhakamāori ā-waha, ā-tuhi, tae atu ki te torotoro i ētahi āhuatanga whakangungu hou.
13. Te āta tiro tiro me pēhea e wātea ai te putunga rauemi reo Māori ki te tokomaha, hei tautoko i te rere o te reo papai, o te kōrero tika.
14. Te āta tiro tiro me aha a *He Pātaka Kupu 2* – te putanga tuarua o te papakupu reo Māori.
15. Te waihanga me te whakamōhio haere i ngā aratohu mō ngā tohu iriwhare reorua ki te kāwanatanga ā-motu, ā-rohe, ki ngā pakihī, mā roto anō hoki i te ao pāpāho o Aotearoa.
16. Te ārohi i tētahi putanga hou o *Te Matatiki* – he papakupu o ngā kupu Māori hou.

### **Te mahi tahi ki ngā rangapū reo Māori**

17. Te āta arotake i ā mātou kaupapa whakatairanga katoa, tae atu ki ngā hui me ngā rauemi whakatairanga.
18. Te arotake he aha i whakaputaina ai a *He Muka*, me pēhea te takoto o ngā kōrero, ā, mā wai rawa te putanga hauwhā nei.
19. Te whakakapi i ā mātou pae tukutuku tawhito e whā<sup>3</sup> ki tētahi mea hou kotahi, he mea hanga ki ngā hangarau papai o nāianei, e torokaha ake ai ngā hono ki ō matou rangapū reo Māori. Ka huaki te pae tukutuku nei ā te mutunga o Pipiri 2015, hei hāpai i Te Wiki o te Reo Māori. Mō te Hereturikōkā 2015 oti mārire ai.
20. Te tārai rautaki pārongo/matihiko mō te whakahaere nei hei ārahi i ā mātou mahi whakamahere, whakahaere matihiko, ICT, pārongo, hei kauawhi anō hoki i te wāhi nui ki te pāhpori i ngā mahi whakahauora reo.

### **Ngā ratonga rangatōpū**

21. Te whakatatū i ngā whakaritenga mō te tari e noho ai mātou ā ngā tau e toru e tū mai nei.
22. Te whakatinana i tētahi pūnaha whakakōnae whitihiko hou, e pai ake ai tā mātou tiaki i ngā pārongo huhua, me te wherawhera anō hoki i ētahi whakaaro mō te pūnaha whitihiko hei tiaki i ngā tuhinga katoa.
23. Te arotake i ngā pūnaha me ngā rāwekeweke whakaroto o ngā pūnaha ICT e whāia ana ināianei, me te āta whakatairite i te nui o te utu ki te nui o te hua o tēnā, o tēnā.

---

<sup>3</sup> Koia ēnei, ko: [www.tetaurawhiri.govt.nz](http://www.tetaurawhiri.govt.nz), ko [www.koreroMāori.co.nz](http://www.koreroMāori.co.nz) mō Kōrero Māori, ko [www.matero.co.nz](http://www.matero.co.nz) – te pae tukutuku tautoko i ngā tono pūtea i raro i a Mā te Reo, me te pae tukutuku hou mō He Puna Whakarauora, a <http://whakarauora.org.nz>

## Te anga whakaatu i ngā mahi kia tutuki

### Ngā hoahoa

Ko tā te whakaahua 1 (nō roto i te SOI 2014–18<sup>4</sup>) he whakakite i ngā huānga matua o te anga o ngā mahi kia tutuki. E tino kitea ana te tū tahi, te hāpai tahi o:

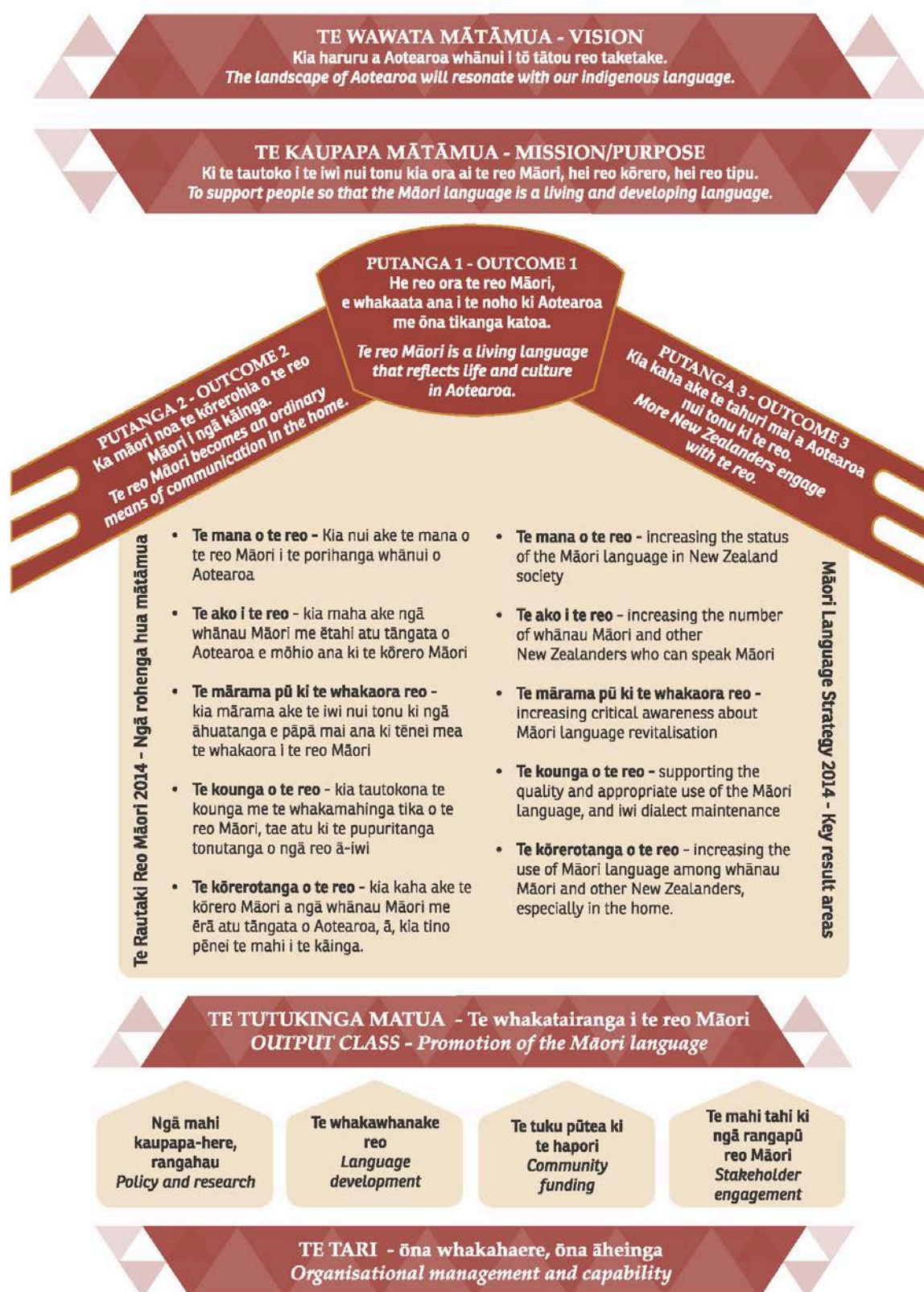
- tō mātou wawata me tā mātou kaupapa mātāmua
- ā mātou putanga e toru
- ngā rohenga hua mātāmua e rima kei te MLS 2014
- te karangatanga tutukinga me ā mātou mahi/ratonga
- ki hea whakapaua ai ngā rawa, ngā kaha.

E whakaatu ana ngā Whakaahua 2 ki te 6 i te hononga o ngā tohu ine i te tutuki o ngā mahi ki tēnā, ki tēnā kawenga, me ngā kawenga kei Te Taura Whiri i te Reo Māori e pīkau ana.

---

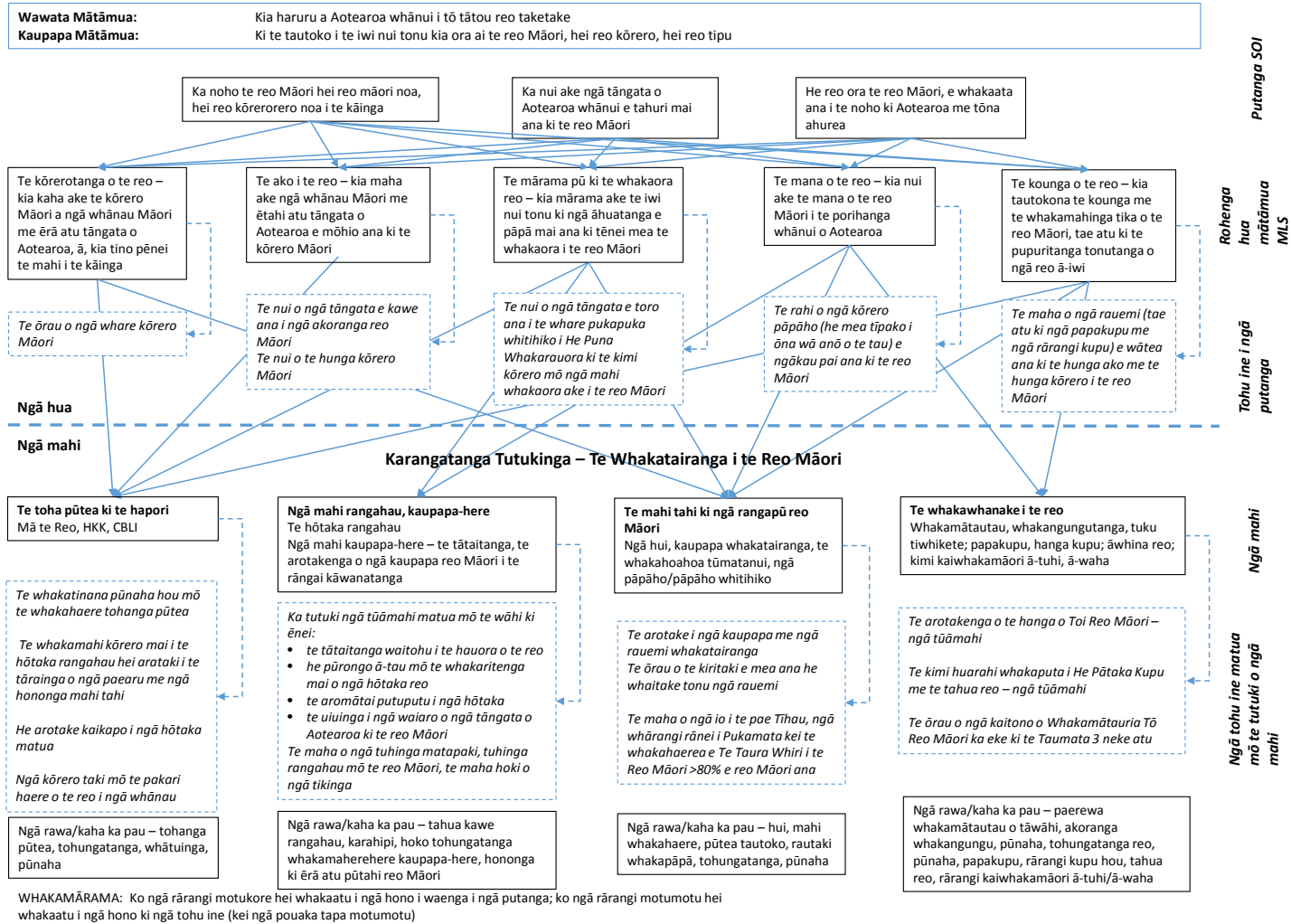
<sup>4</sup> Kei te [www.tetaurawhiri.govt.nz](http://www.tetaurawhiri.govt.nz).





## Whakaahua 2: Te Hoahoa Whakaatu i ngā Whakahaere

### Te Taura Whiri i te Reo Māori – He Tiro Whānui ki ngā Whakahaere



## Ka pēhea tā mātou ine i te tutuki o ngā mahi?

### *Ngā tohu ine i ngā putanga*

Āpiti atu ki ngā tohu ine e rārangi mai ana i ngā whārangi e whai ake nei, ka whakatairite anō hoki mātou i ngā mahi e tutuki ana ki ngā putanga, me ngā rohenga hua mātāmua o te MLS 2014. Kei tō mātou SOI 2014-18 ēnei tohu ine. Inā koa:

- te ōrau o ngā whare kōrero Māori
- te nui o ngā tāngata e kawea ana i ngā akoranga reo Māori
- te nui o te hunga kōrero Māori
- te nui o ngā tāngata e toro ana i te whare pukapuka whitihiko i He Puna Whakarauora ki te kimi kōrero mō ngā mahi whakaora ake i te reo Māori
- te rahi o ngā kōrero pāpāho (he mea tīpako i ōna wā anō o te tau) e ngākau pai mai ana ki te reo Māori
- te maha o ngā rauemi e wātea ana ki te hunga ako me te hunga kōrero i te reo Māori.

### *Ngā tohu ine SPE*

Ko ngā tohu ine kei ngā tūtohi e whai ake nei mō tēnā, mō tēnā kāhui mahi, ko te whakakotahitanga o:

- ngā keonga tūāmahi mō ngā mahi e mahia ana hei arotake i ngā ratonga o nāianeī, hei whakarite ratonga hou anō hoki
- ngā tohu ine taha whakahaere (ngā waitohu i te whaihua, ngā waitohu whakahaere ratonga, me ngā ia o roto i ngā kawenga) e arotahi ana ki te whakatutukinga o ā mātou mahi o ia rā.

### *Ngā mahi rangahau, kaupapa-here*

Ngā matapae mō ngā whakapaunga katoa:

2014/15 – \$2,451,770

2015/16 – \$2,617,981

He whakarato pūtea Te Taura Whiri i te Reo Māori ki ngā rangahau, ngā whakawhanaketanga me ngā hōkaitanga hou e tautoko ana i te whakaoranga ake o te reo Māori. Ka whakatakoto whakaaro tuawhiti anō hoki ki ngā take e pā ana ki te reo, tae atu ki te tāpae whakaaro mō

ngā huarahi e puta ai i ngā kaupapa-here tūmatanui he painga ki te reo Māori. Ko tētahi arotahinga o ngā mahi i tēnei whaitua, ko te whakaputa raraunga pai, ko te tuhi pārongo whai taunakitanga hei ārahi i ngā whiriwhiringa, ā, ko te whakapakari tonu i ngā ariā mō te whakahauora reo i Aotearoa.

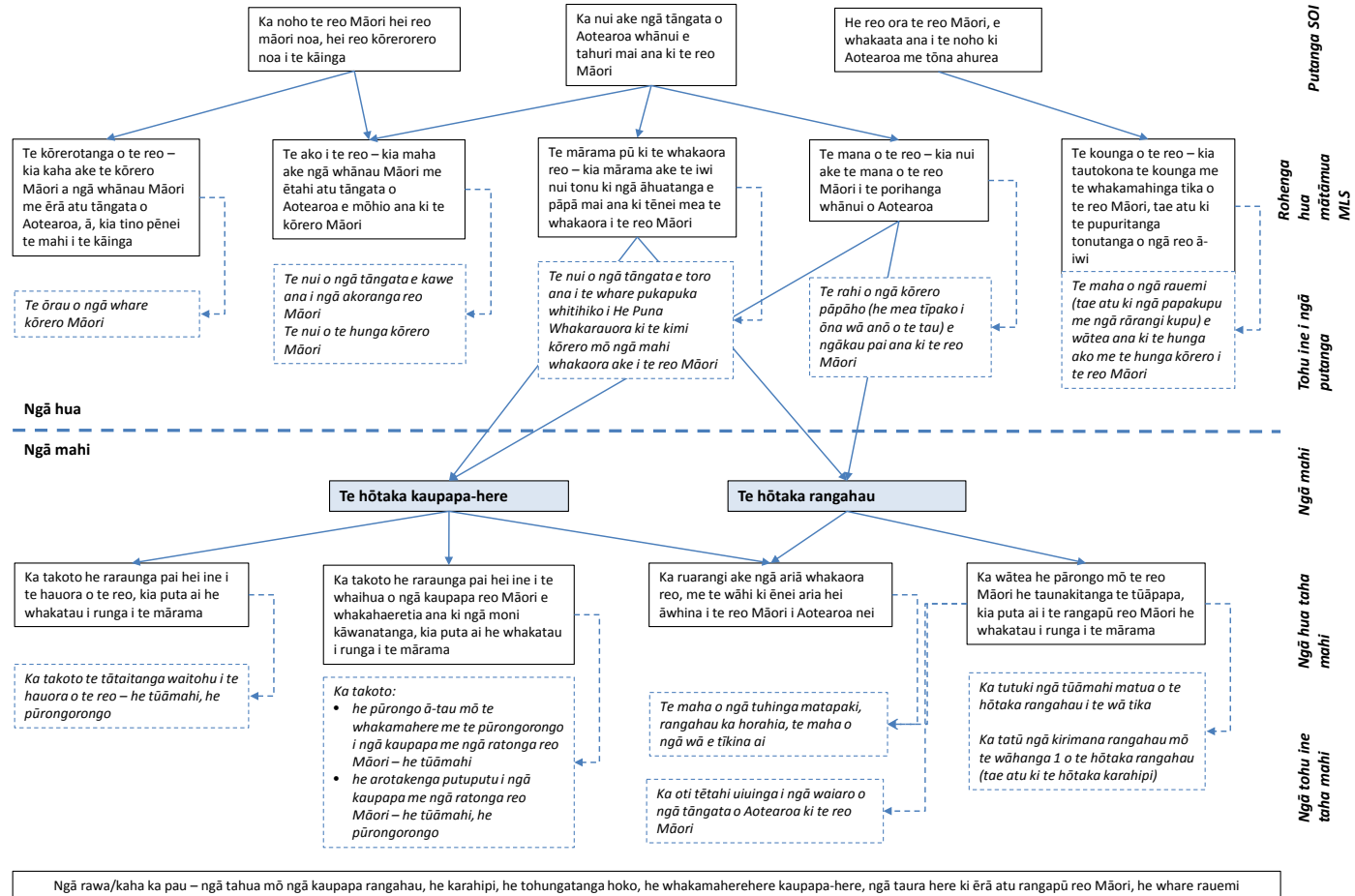
I roa ake te whakatūnga o te pūtahi rangahau, a He Puna Whakarauora, i tērā i matapaetia i te SOI 2013–16. Me te aha, ka kawea te whakaūnga me te whakaputanga o te tūtohu rangahau reo Māori ki te tau pūtea 2014/15. Whaihoki, ko te tūāoma tuatahi o ngā kaupapa rangahau, e kawea tonutia ana ā te 2015/16 me te 2016/17.

E whakaatu ana te Whakaahua 3 i ngā hono o ngā mahi kaupapa-here, rangahau, tae atu ki ngā putanga me ngā tohu ine e rite ana (kei te tūtohi ka whai ake) ki te tīrewa putanga whānui a te whakahaere nei.

DRAFT

Whakaahua 3: Ngā mahi rangahau, kaupapa-here

Ngā mahi rangahau, kaupapa-here



WHAKAMĀRAMA: Ko ngā rārangi motukore hei whakaatu i ngā hono i waenga i ngā putanga; ko ngā rārangi motumotu hei whakaatu i ngā hono ki ngā tohu ine (kei ngā pouaka tapa motumotu)

NGĀ TOHU INE – NGĀ MAHI RANGAHAU, KAUPAPA-HERE	NGĀ IA O TAU TATA			TUTUKINGA 2014-15				MATAPAE 2015-16	MATAPAE 2016-17	TE HONO KI TE MLS 2014
	2011-12 Tūturu	2012-13 Tūturu	2013-14 Tūturu	Matapae	Tutukinga ki te Hauwhā 3 2014/15	Tihoinga	Whakamārama			
<b>Ngā waitohu i te whaihua</b>										
Te tuhinga me te pānuitanga o ngā tānga rangahau, matapaki kei te pae pukapuka whitihiko	Tohu ine hou			Ka 200 ngā kapohanga	N/A	N/A	E whā ngā tānga kua utaina ki te pae tukutuku a Te Taura Whiri. Engari kāore e taea te tatau ngā wā e tīkina ai tēnā me tēnā. Kia rite te pae tukutuku hou (ā te tīmatanga o te tau 2015/16) hei reira ka taea.	≥1,200 ngā wā e toroa ai ngā tānga	≥1,600 ngā wā e toroa ai ngā tānga	Te mārama pū ki te whakaora reo
<b>Ngā waitohu whakahaere ratonga</b>										
Te eke o ngā tūāmahi o te hōtaka rangahau, whakawhanake kua whakaaetia ā te wā e tika ana	Tohu ine hou			Ko te tikanga ka puta te pūrongo o te kaupapa rangahau māna e tautohu ngā whāinga tōmua mō te tūtohu rangahau, ka noho hoki tēnei hei mahere mō tā mātou hōtaka rangahau i ngā tau maha e heke mai nei.			Ka eke ngā tūāmahi	Ka eke ngā tūāmahi	Te mārama pū ki te whakaora reo	
Te tāpaenga o te tātaitanga waitohu i te hauora o te reo	Tohu ine hou						Ngā tūāmahi me te wātaka pūrongo	Ngā tūāmahi me te wātaka pūrongo	Te mārama pū ki te whakaora reo Te mana o te reo	
Te tāpaenga o te pūrongo ā-tau mō te whakamahere me te pūrongo mō ngā hōtaka reo Māori i te rāngai kāwanatanga	Tohu ine hou						Ngā tūāmahi me te wātaka pūrongo	Ngā tūāmahi me te wātaka pūrongo	Te mārama pū ki te whakaora reo Te mana o te reo	
Te kawenga o te hōtaka arotake putuputu i ngā kaupapa me ngā ratonga reo Māori	Tohu ine hou						Ka oti te hōtaka te ārohi ā te Hakihea 2015	Ka whakatinanatia te hōtaka ā te 2016/17	Te mārama pū ki te whakaora reo Te mana o te reo	

NGĀ TOHU INE – NGĀ MAHI RANGAHAU, KAUPAPA-HERE	NGĀ IA O TAU TATA			TUTUKINGA 2014-15				MATAPAE 2015-16	MATAPAE 2016-17	TE HONO KI TE MLS 2014
	2011-12 Tūturu	2012-13 Tūturu	2013-14 Tūturu	Matapae	Tutukinga ki te Hauwhā 3 2014/15	Tihoinga	Whakamārama			
Te otinga o te uiuinga i ngā waiaro o Aotearoa whānui ki te reo Māori	Tohu ine hou							Ka oti te uiuinga te ārohi, te hoahoa ā te 30 Pipiri 2016	Ka kawea te uiuinga i mua i te mutunga o Hakihea 2016; ka pūrongotia i mua i te 31 Poutūterangi 2017	Te mana o te reo Te mārama pū ki te whakaora reo
Te whakatū hōtaka karahipi (kia kaha ake te huri mai, te whai wāhi mai a te motu)	Tohu ine hou			Ā te Paenga-whāwhā 2015	N/A	N/A	E kore e tutuki ā te Paengawhāwhā 2015. Ka noho hei arotahinga tōmua mō te 2015/16, i runga i te tūtohu rangahau ka tae mai i te Paengawhāwhā 2015.	Ā te Hakihea 2015	N/A	Te mana o te reo
Te whakatutuki kirimana rangahau mō te tūāoma 1 o te whakatūnga pūtahi rangahau	Tohu ine hou			Ā te Paenga-whāwhā 2015	E 5 ngā kaupapa i whakahaerehia: E 2 kua tutuki – te pae tukutuku/tāwaha me te pūrongo tūtohu rangahau; 1 kei te noho kirimana tonu; 1 te RFP kei te haere tonu; 1 kei te āta whiriwhiria tonutia		Ka oti ngā mea e 3 e toe ana ā ngā wā e tika ana	Ka oti ngā mea e 3 e toe ana ā ngā wā e tika ana	Te mana o te reo	
<b>Ngā ia o roto i ngā mahi</b>										
Te maha o ngā tuhinga matapakahi, rangahau ka tāpaea mā te rangapū reo Māori	Tohu ine hou			4	4	0%	I tutuki te matapae. E 4 ngā tuhinga kua iri ki te pae tukutuku a Te Taura Whiri.	300	400	Te mārama pū ki te whakaora reo

Koia nei ngā kaupapa e rima kei te tūāoma 1 o ngā mahi whakawhanake pūtahi rangahau (ko te tuhi *tītaha* hei tohu i te ingoa ake o tēnā, o tēnā):

- *Stakeholder engagement national research agenda for the regeneration and revitalisation of te reo Māori* – i takoto te pūrongo whakamutunga i te 30 Paengawhāwhā 2015
- *Create a research portal* – i ara tōna pae tukutuku i waenga o te 2014; ko te wāhanga tuatahi o ngā kōrero rangahau e whakairia ana i te hauwhā tuawhā o 2014/15.

- *Measure the health of the Māori language in homes and communities – ka whakaputaina ngā kōrero ā te 1 Huitanguru 2017*
- *Measure the value of the Māori language and culture to the NZ economy – ka whakaputaina ngā kōrero ā te 1 Huitanguru 2016*
- *Evaluate the impact of language regeneration and revitalisation workshops and their role in community-led language regeneration and revitalisation – ka whakaputaina ngā kōrero ā te 20 Huitanguru 2017.*

DRAFT



## *Te whakawhanake i te reo*

Ngā matapae mō ngā whakapaunga katoa:

2014/15 – \$1,065,206

2015/16 – \$726,477<sup>5</sup>

He huhua ngā mahi whakawhanake reo a Te Taura Whiri i te Reo Māori hei whakapūmau i te mana, i te uho o te reo Māori, taha reo, taha tikanga. Anei ētahi:

- te whakautu i ngā uiui mō te whakamahi tika i te reo
- te whakatū paerewa mō te hanga kupu hou
- te whakahou haere i ngā papakupu me ngā rārangi kupu kia noho mai ai ki te punakupu ngā kupu hou e hiahiatia ana
- te tiaki putunga kupu (he pātengi tauira kōrero hei ārahi, hei whakatūturu i ngā whakatakotoranga kōrero o ēnei rā)
- te whakarite paerewa mō te āta whakangungu i ngā kaiwhakamāori ā-tuhi, ā-waha, tae atu ki te whakamātautau me te whakamana i ō rātou tohungatanga ki ēnei mahi
- te whakarite huarahi e āhei ai ngā kaimahi, ngā ākonga me te iwi whānui te whakamātau i tō rātou matatau ki te reo Māori.

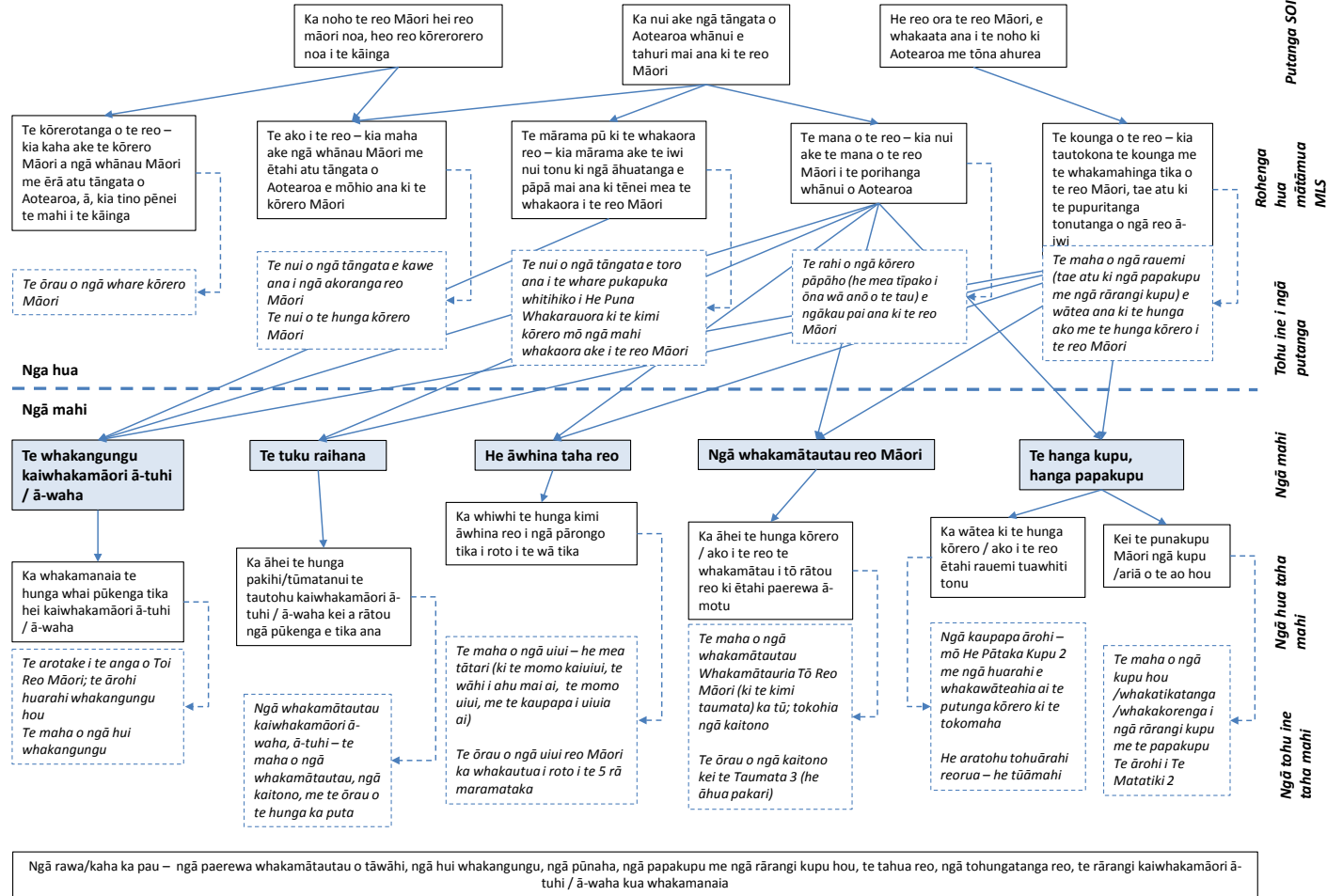
E whakaatu ana te Whakaahua 4 i ngā hono o ngā mahi whakawhanake reo, ōna putanga me ōna inenga (kei te tūtohi ka whai ake) ki te tīrewa putanga whānui a te whakahaere nei.

---

<sup>5</sup> I iti iho ai te matapae whakapaunga pūtea mō te 2015/16 i te mea kua kī katoa ngā tūranga mahi o te kāhui, kua mutu te tahuri ki ngā ringa kirimana hei whakakīki whārua.

Whakaahua 3: Te whakawhanake i te reo

Te whakawhanake i te reo



NGĀ TOHU INE - TE WHAKAWHANAKE I TE REO	NGĀ IA O TAU TATA			TUTUKINGA 2014-15			MATAPAE 2015-16	MATAPAE 2016-17	TE HONO KI TE MLS 2014
	2011-12 Tūturu	2012-13 Tūturu	2013-14 Tūturu	Matapae	Tutukinga ki te Hauwhā 3 2014/15	Tihoinga			
<b>Ngā waitohu i te whaihua</b>									
Te arotake i te anga (ngā paerewa me ngā paearu whakangungu, ngā whakamātautau) o Toi Reo Māori				Tohu ine hou			Pūrongo ārohi – ā te 31 Poutūterangi 2016	Te tārai tauira tuatahi o te anga hou - ā te 31 Poutūterangi 2017	Te kounga o te reo Te mana o te reo
Te tuhi pūrongo ārohi mō: He Pātaka Kupu 2, me te whai kia wātea te putunga kōrero ki te tokomaha				Tohu ine hou			Ā te Pipiri 2016	Te tipako me te whakatinana i te kōwhiringa ka whakaaeita	Te kounga o te reo
Te whakatakoto aratohu mō ngā tohu iriwhare reorua				Tohu ine hou			Pipiri 2016	Te tuku whānui i ngā aratohu ā te Hakihea 2016	Te kounga o te reo
Te hanga tauira hou o <i>Te Matatiki</i> , te papakupu kupu hou				Tohu ine hou			N/A	Te tuhi pūrongo ārohi mō <i>Te Matatiki 2</i> ā te 30 Pipiri 2017	Te kounga o te reo Te mana o te reo

NGĀ TOHU INE - TE WHAKAWHANAKE I TE REO	NGĀ IA O TAU TATA			TUTUKINGA 2014-15			MATAPAE 2015-16	MATAPAE 2016-17	TE HONO KI TE MLS 2014	
	2011-12 Tūturu	2012-13 Tūturu	2013-14 Tūturu	Matapae	Tutukinga ki te Hauwhā 3 2014/15	Tihoinga				Whakamārama
<b>Ngā waitohu whakahaere ratonga</b>										
Te ōrau o ngā uiui mai i waho mō te reo Māori ka whakautua i roto i te 5 rā maramataka	Tohu ine hou		94%	95%	84%	(12%)	E kore pea e eke te matapae. Ko te nuinga o ngā uiui ka whakautua i roto i te 1-2 rā, engari i te timu me te pari o ngā kaimahi, arā ētahi uiui uua kāore e whakautua i te 5 rā.	95%	≥95%	Te kounga o te reo
<b>Ngā ia o roto i ngā tutukinga</b>										
Te maha o ngā uiui mai i waho mō te reo Māori ka tae mai	351	395	288	300	206	(31%)	Kei te āhua tonu o te nui o ngā uiui – e kore pea e eke panuku i tēnei tau.	300	350	Te kounga o te reo
Te tātari i ngā momo uiui (i runga i te āhua o te kaiuiui, te wāhi kei reira ia e noho ana, te āhua o te uiui, me te kaupapa i uiui ai)	Tohu ine hou			Karekau he keonga. E whakaata noa ana i te āhua o tēnei pīkaunga.	Taka mai ki tēnei wā, e 50% o ngā uiui (102) nō te rāngai kāwanatanga; e 44% (90) nō te rāngai tūmataiti, nō ngā tāngata takitahi rānei, e 7% (14) nō roto tonu i te tari o Te Taura Whiri i te Reo Māori.		Kāore he keonga; hei whakaata noa i te āhua o tēnei pīkaunga.			Te kounga o te reo

NGĀ TOHU INE - TE WHAKAWHANAKE I TE REO	NGĀ IA O TAU TATA			TUTUKINGA 2014-15				MATAPAE 2015-16	MATAPAE 2016-17	TE HONO KI TE MLS 2014
	2011-12 Tūturu	2012-13 Tūturu	2013-14 Tūturu	Matapae	Tutukinga ki te Hauwhā 3 2014/15	Tihoinga	Whakamārama			
Te maha o ngā kupu hou/whakatikatika /whakakorenga ki ngā tahua kupu / papakupu Māori (te tapeke, me ngā wehenga ā-karangatanga)	Tapeke: e 2,266; e 5 ngā kupu hou	Tapeke: e 2,385; 149 ngā kupu hou	Tapeke: e 2,423; e 230 ngā kupu hou	Tapeke: kia 2,000; kia ≥ 230 ngā kupu hou	Tapeke: kua 1,694; e 65 ngā kupu hou	(15%) tapeke (72%) kupu hou	Te tikanga ka hipa atu i te matapae mō te tapeke o ngā whakatikatika. Ka waihangaia noatia he kupu hou i tonoa tētahi. E kore pea e eke te matapae.	Ka mau tonu, ka pai ake rānei te ia.	Ka mau tonu, ka pai ake rānei te ia.	Te kounga o te reo
Te maha o ngā whakamātautau Whakamātauria Tō Reo Māori (Whakamātautau Tohu Taumata) ka takoto, me te tokomaha ka whakamātautauria	e 5 ngā whakamātautau	e 4 ngā whakamātautau	e 5 ngā whakamātautau	Ka mau tonu, ka pai ake rānei te ia	4	(20%)	Kotahi anō te whakamātautau ka tū, ā te Hauwhā 4. Te tikanga ka eke te matapae mō te tau.	Ka mau tonu, ka pai ake rānei te ia.	Ka mau tonu, ka pai ake rānei te ia.	Te kounga o te reo; Te mana o te reo
	e 44 te hunga i whakamātautauria	e 42 te hunga i whakamātautauria	102 te hunga i whakamātautauria		24	(62%)	Kotahi anō te whakamātautau ka tū, ā te Hauwhā 4. E kore pea e eke te matapae, i te mea kei te āhua o te kaha hiahia mai e waho.			
Te ōrau o te hunga ka whakamātautauria kei te Taumata 3 (āhua matatau)	52%	50%	66%	Ka mau tonu, ka pai ake rānei te ia	75%	N/A	Te tikanga ka eke te matapae mō te tau.	Ka mau tonu, ka pai ake rānei te ia	Ka mau tonu, ka pai ake rānei te ia	Te kounga o te reo; Te mana o te reo

NGĀ TOHU INE - TE WHAKAWHANAKE I TE REO	NGĀ IA O TAU TATA			TUTUKINGA 2014-15				MATAPAE 2015-16	MATAPAE 2016-17	TE HONO KI TE MLS 2014
	2011-12 Tūturu	2012-13 Tūturu	2013-14 Tūturu	Matapae	Tutukinga ki te Hauwhā 3 2014/15	Tihoinga	Whakamārama			
Te whakamātautau kaiwhakamāori ā-tuhi o Toi Reo Māori – te maha o ngā whakamātautau, o te hunga ka whakamātautauria, me te hunga ka puta	1 te whakamātautau	1 te whakamātautau	1 te whakamātautau	Ka mau tonu, ka pai ake rānei te ia	N/A	N/A	Hei te tīmatanga o te Q4 te whakamātautau	Ka mau tonu, ka pai ake rānei te ia	Ka mau tonu, ka pai ake rānei te ia	Te kounga o te reo; Te mana o te reo
	e 3 i whakamātautauria	e 9 i whakamātautauria	15 i whakamātautauria		N/A	N/A				
	0%	22%	20%		N/A	N/A				
Te whakamātautau kaiwhakamāori ā-waha o Toi Reo Māori - te maha o ngā whakamātautau, o te hunga ka whakamātautauria, me te hunga ka puta	1 te whakamātautau	1 te whakamātautau	1 te whakamātautau	Ka mau tonu, ka pai ake rānei te ia	N/A	N/A	Hei te tīmatanga o te Q4 te whakamātautau	Ka mau tonu, ka pai ake rānei te ia	Ka mau tonu, ka pai ake rānei te ia	Te kounga o te reo; Te mana o te reo
	e 3 i whakamātautauria	e 4 i whakamātautauria	e 4 i whakamātautauria		N/A	N/A				
	0%	25%	0%		N/A	N/A				

## *Te toha pūtea ki te hapori*

Ngā matapae mō ngā whakapaunga katoa:

2014/15 – \$7,062,246

2015/16 – \$9,683,066<sup>6</sup>

He tautoko tā Te Taura Whiri i te Reo Māori i ngā kaupapa e kawea ana e te whānau, e te hapū, e te iwi, e te hapori Māori hei whakaora ake i te reo Māori, mā roto i ngā tahua e whai ake nei: Mā te Reo, He Kāinga Kōrerorero, me te CBLI. Ko mātou tēnā ki te whakahaere i ngā tono pūtea me ngā kirimana ka puta ake i ngā tono. Ka mahi anō mātou ki te whiri taura ki ngā rōpū e kaha hāpai ana i te reo, ki ngā kaituku kaupapa, ratonga reo Māori, me ētahi atu kaitoha pūtea reo Māori.

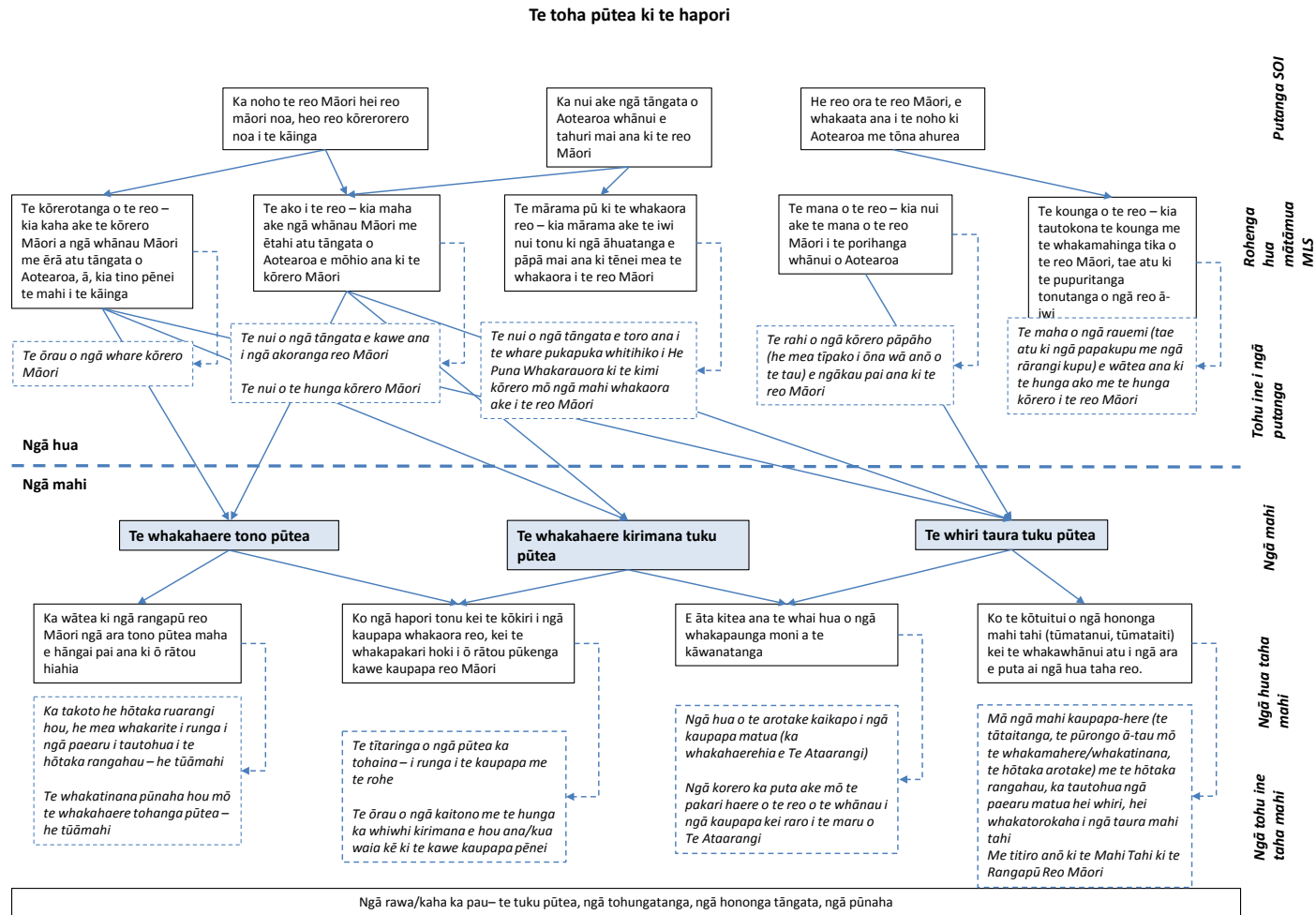
Arā te whāinga o ēnei mahi toha pūtea, kia takoto he ara maha e tono ai ngā rōpū Māori i ngā moni e tika ana hei whakatutuki i ā rātou kaupapa reo Māori. Ko tētahi mātāpono taketake o ngā mahi whakapakari i te reo i ngā kāinga me ngā hapori, ko te whakaae mārire ko ngā kaupapa ka hoahoina, ka kawea e ngā hapori mā rātou anō, ka whaihua ake i ērā ka hoahoina, ka torohakina atu ki te hapori e te rāwaho. Arā kē te mahi mā Te Taura Whiri i te Reo Māori, ko te tautoko i ngā kaupapa a te hapori, kauaka mā mātou rātou e ārahi, e tohutohu.

E whakaatu ana te Whakaahua 5 i ngā hono o ngā mahi toha pūtea ki te hapori, ngā hua me ngā tohu ine kua tohua mō aua mahi (kei te tūtohi ka whai ake) ki te tīrewa putanga whānui a te whakahaere nei.

---

<sup>6</sup> Kei te tapeke o te tau 2015/16 tētahi moni kāore i pau ki te CBLI i te tau 2014/15, he mea kawē mai ki tēnei tau.

Whakaahua 5: Te toha pūtea ki te hapori



WHAKAMĀRAMA: Ko ngā rārangi motukore hei whakaatu i ngā hono i waenga i ngā putanga; ko ngā rārangi motumotu hei whakaatu i ngā hono ki ngā tohu ine (kei ngā pouaka tapa motumotu)



NGĀ TOHU INE – TE TUKU PŪTEA KI TE HAPORI	NGĀ IA O TAU TATA			TUTUKINGA 2014-15			MATAPAE 2015-16	MATAPAE 2016-17	TE HONO KI TE MLS 2014
	2011-12 Tūturu	2012-13 Tūturu	2013-14 Tūturu	Matapae	Tutukinga ki te Hauwhā 3 2014/15	Tihoinga			
<b>Ngā waitohu i te whaihua</b>									
He hōtaka hou, he hōtaka ruarangi tonu, ko ngā paearu ka tautohua i te hōtaka rangahau hei ārahi i ngā paearu				Tohu ine hou			Ka tautohua, ka whakatinanatia ngā paearu ā te 30 Pipiri 2016	Ka arotakea i ōna wā anō kia rere ngātahi ēnei mahi me ngā kitenga o ngā mahi rangahau hou – he tūāmahi	Te ako i te reo; Te kōrerorero o te reo
Ka puta ngā hua e whāia ana i ngā kaupapa nui e tautokona ana ki te pūtea				Tohu ine hou			Ka oti ngā kaupapa a Te Ataarangi te arotake kaikapo ā te 30 Mahuru 2015	Ka whakatinanatia ngā tauanakitanga ka hua ake i te arotakenga ā te tau pūtea 2016/17	Te ako i te reo; Te kōrerorero o te reo
Ka pakari ake te reo Māori o te hunga mā rātou ngā kaupapa e tautokona ana ā-putea							Ngā kōrero o te pakari haere ka puta ake i He Kāinga Kōrerorero me He Kura Whānau Reo		Te ako i te reo; Te kōrerorero o te reo
<b>Ngā waitohu whakahaere ratonga</b>									
E tutuki ana i te pūnaha whakahaere putea te kaupapa i whakatūria ai a ia				Tohu ine hou			Te whakatinana i ngā ritenga tono hou ā te 15 Hōngongoi 2015; me ngā ritenga kirimana ā te Hakihea 2015	Te arotake me te ārohi i ētahi atu mahi whakapai ake i te haere o te kaupapa	Te ako i te reo; Te kōrerorero o te reo

NGĀ TOHU INE – TE TUKU PŪTEA KI TE HAPORI	NGĀ IA O TAU TATA			TUTUKINGA 2014-15			MATAPAE 2015-16	MATAPAE 2016-17	TE HONO KI TE MLS 2014
	2011-12 Tūturu	2012-13 Tūturu	2013-14 Tūturu	Matapae	Tutukinga ki te Hauwhā 3 2014/15	Tihoinga			
<b>Ngā ia o roto i ngā tutukinga</b>									
Te maha o ngā tono ki a Mā te Reo/CBLI, te \$ ka tonoa, te maha o ngā tono me te rahi o te \$ ka whakaaetia	Tohu ine hou			Ka mau tonu, ka pai ake rānei te ia	185 ngā tono (tae atu ki ētahi tono pūtea rautaki e 7) i tae mai, e \$7,750,275 i tonoa. O ngā tono 185, e 96 i whakaaetia, e \$3,011,835 te moni i whakaaetia.		Ka mau tonu, ka pai ake rānei te ia	Ka mau tonu, ka pai ake rānei te ia	Te ako i te reo; Te kōrerorero o te reo
Ka tohaina he pūtea ki ngā momo kaupapa maha, ki ngā momo rōpū maha, i te maha noa atu o ngā rohe	Tohu ine hou			Kāore he matapae – hei whakaahua noa	Hei tauria o ngā mea i tautokona, ko te atamira Māori ki Polyfest, i Tāmaki, he wānanga reo i Ōtepoti, he mahere reo mō Te Iwi o Ngāti Koata, he whārangi meka reo Māori mō te ika ka mahia e NZ Landcare Trust, he taupānga kawekawe mā te hunga āhua matatau ki te reo Māori		Kāore he matapae – hei whakaahua noa	Kāore he matapae – hei whakaahua noa	Te ako i te reo; Te kōrerorero o te reo
Ko te ōrau o ngā kaitono/kaikirimana i raro i a Mā te Reo/CBLI, he:									
Kaitono hou	Tohu ine hou	46%	≥ 40%	49%	23%	E 37 o ngā kaitono e 75 i waimarie i te Whiringa 14 o MTR, koinei tā rātou tono tuatahi. (Ko ētahi kaitono he maha kē ā rātou tono motuhake.)	≥ 40%	≥ 40%	Te ako i te reo; Te kōrerorero o te reo
Kaitono kua hia tau e tono pūtea ana (arā, kua > 4 tau e tautokona ana mai i te Whiringa 10)	Tohu ine hou	19%	≥ 20%	19%	(7%)	14 o ngā kaitono e 75 i waimarie i te Whiringa 14 o MTR, kua >4 tau e whiwhi pūtea ana mai i te Whiringa 10.	≥ 20%	≥ 20%	Te ako i te reo; Te kōrerorero o te reo

## *Te mahi tahi ki ngā rangapū reo Māori*

Ngā matapae mō ngā whakapaunga katoa:

2014/15 – \$1,025,764

2015/16 – \$966,135

Ko tētahi o ngā pīkaunga matua a Te Taura Whiri i te Reo Māori, he whakatairanga i te rere o te reo Māori hei reo mataora, hei reo kōrerorero noa o ia rā. He maha ā mātou kaupapa tautoko, whakawhanaunga ki ngā rōpū hāpai nui i te reo Māori e tutuki ai tēnei, tae atu ki ēnei:

- te whakatū kaupapa nui, hui nui hei whakatairanga i te reo – Te Wiki o te Reo Māori, Ngā Tohu Reo Māori, me ētahi atu kaupapa ka āta tohua
- te waihanga me te tohatoha rauemi hei tautoko i ēnei kaupapa nui
- te mahi tahi ki te ao pāpāho me ngā rōpū whai pānga nui mai ki te reo
- te whakamahi i ngā ara whitihiko me ngā ara pāhopori e pai ai te kōrero tahi, te whakawhanaunga tahi ki ngā rōpū whai pānga nui mai ki te reo.

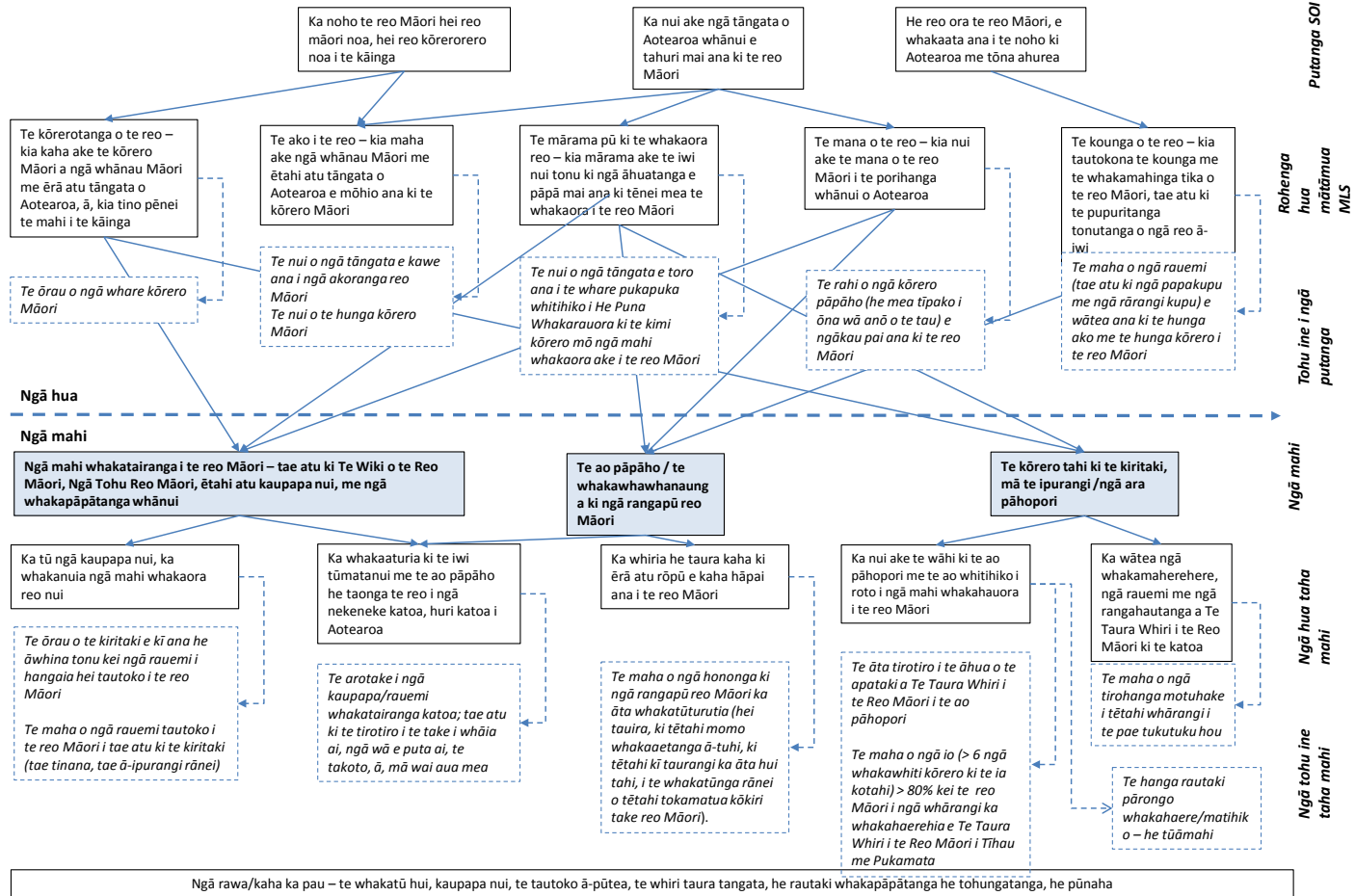
Ko tētahi o ngā mahi nui i tēnei tau, ko te hanga pae tukutuku hou e kōtuia ai ngā kōrero me ngā kawenga katoa o ēnei pae tukutuku tawhito e whā - [www.tetaurawhiri.govt.nz](http://www.tetaurawhiri.govt.nz), [www.koreromāori.co.nz](http://www.koreromāori.co.nz), [www.ma-tereo.co.nz](http://www.ma-tereo.co.nz) me te [www.whakarauora.org.nz](http://www.whakarauora.org.nz). Ka ara te pae tukutuku hou ā te Pipiri 2015 hei tautoko i Te Wiki o te Reo Māori 2015. Hei te Hereturikōkā 2015 ka tino tika te tū.

Āpiti atu ki tērā, ko te Rauaki Reo Māori 2014 rāua ko te Minita Whanaketanga Māori kei te akiaki i a mātou kia mahi tahi ki ērā atu rōpū o te rāngai reo Māori ki te kōkiri i ngā take e koroa tahitia ana, tae atu ki ngā arumanga rangahau, te aroturuki me te pūrongorongo i ngā hōtaka reo Māori, me te tārai tātaitanga waitohu i te hauora o te reo Māori.

E whakaatu ana te Whakaahua 6 i ngā hononga o te mahi tahi ki te rangapū reo Māori, tae atu ki ōna hua me ōna tohu ine e rite ana (kei te tūtohi ka whai ake) ki te tīrewa putanga whānui a te whakahaere nei.

Whakaahua 6: Te mahi tahi ki ngā rangapū reo Māori

Te mahi tahi ki ngā rangapū reo Māori



WHAKAMĀRAMA: Ko ngā rārangī motukore hei whakaatu i ngā hono i waenga i ngā putanga; ko ngā rārangī motumotu hei whakaatu i ngā hono ki ngā tohu ine (kei ngā pouaka tapa motumotu)

NGĀ TOHU INE – TE MAHI TAHI KI NGĀ RANGAPŪ REO MĀORI	NGĀ IA O TAU TATA			TUTUKINGA 2014-15				MATAPAE 2015-16	MATAPAE 2016-17	TE HONO KI TE MLS 2014
	2011-12 Tūturu	2012-13 Tūturu	2013-14 Tūturu	Matapae	Tutukinga ki te Hauwhā 3 2014/15	Tihoinga	Whakamārama			
<b>Ngā waitohu i te whaihua</b>										
Te arotake i ngā kaupapa me ngā rauemi whakatairanga katoa	Tohu ine hou							Ka oti te ārohitanga me te arotakenga ā te 30 Pipiri 2016	Ka whakatinanatia ngā marohi katoa ā te 30 Pipiri 2017	Te mana o te reo; Te kounga o te reo; Te mārama pū ki te whakaora reo
Te ōrau o te kiritaki e mea ana he tautoko tonu tā ngā rauemi i hangaia i tā rātou ako i te reo Māori	Tohu ine hou	80%	84%	Ka mau tonu, ka pai ake rānei te ia	89%	N/A	Ka puta ngā kitenga o te uiuinga mō TWRM i kawea i te Mahuru 2014.	Uiuinga ā-tau ≥ 90%	Uiuinga ā-tau ≥ 90%	Te mana o te reo; Te kounga o te reo; Te kōrerotanga o te reo
<b>Ngā waitohu whakahaere ratonga</b>										
Te maha o ngā taura ka whiria ki ngā rangapū matua, he mea whakatūturu ki tētahi momo whakaaetanga ā-tuhi, ki te kī taurangi rānei ka hui tahi, i te whakatūnga rānei o tētahi tokamatua kōkiri take reo Māori).	Tohu ine hou			3	3	0%	Arā tētahi tokamatua ka hui i ia 6 wiki ki te tiroiro i ngā whakaritenga mō Te Wiki o te Reo Māori me Ngā Tohu Reo Māori.	6	9	Te mana o te reo; Te kounga o te reo; Te mārama pū ki te whakaora reo

NGĀ TOHU INE – TE MAHI TAHI KI NGĀ RANGAPŪ REO MĀORI	NGĀ IA O TAU TATA			TUTUKINGA 2014-15			MATAPAE 2015-16	MATAPAE 2016-17	TE HONO KI TE MLS 2014	
	2011-12 Tūturu	2012-13 Tūturu	2013-14 Tūturu	Matapae	Tutukinga ki te Hauwhā 3 2014/15	Tihoinga				Whakamārama
Te maha o ngā io (>6 ngā whakawhiti kōrero ki ia io) e 80 ōrau nui ake rānei te rere o te reo Māori i ngā whārangi ka whakahaerehia e Te Taura Whiri i te Reo Māori i Tihau me Pukamata.	Tohu ine hou			600	861	44%	I hipa atu i tērā i matapaetia. I reo Māori katoa ngā whakawhiti kōrero i tā mātou whārangi i Tihau me ā mātou whārangi Pukamata e rua  Ka whāiti ake te ritenga o tēnei mea te 'io' ā te tau 2015/16 me tua atu, tēnā i te mea i whāia mō te tau 2014/15.	600	700	Te mana o te reo; Te mārama pū ki te whakaora reo
<b>Ngā ia o roto i ngā tutukinga</b>										
Te maha o ngā rauemi hāpai i te ako, i te rere o te reo Māori e horahia ana ki te kiritaki (ahakoa ka tae tinana atu, he mea tiki rānei e rātou i te ipurangi).	522,475	309,600	347,660	320,000	120,816	(62%)	Te tikanga ka eke te matapae ā te roanga o te tau. Kei te piki haere te tīkina o ngā rauemi i te ipurangi, ā, ka mau tonu pea tēnei āhua ina whakairia ngā rauemi mō Te Wiki o te Reo Māori 2015 ki te pae tukutuku ā te Haratua.	320,000	320,000	Te mana o te reo; Te kounga o te reo; Te mārama pū ki te whakaora reo
Te āhua o te apataki a Te Taura Whiri i te Reo Māori i te ao pāhopori	Tohu ine hou			Karekau he matapae	15,418	0%	Ka uru mai ngā arumanga me ngā kupu whakamihi i te pae Tihau kotahi me ngā whārangi Pukamata e rua.	Ka mau tonu, ka pai ake rānei te ia	Ka mau tonu, ka pai ake rānei te ia	Te mana o te reo
Te maha o ngā tirohanga motuhake i tētahi whārangi i te pae tukutuku hou				Tohu ine hou			Kāore anō kia tatū.	Kāore anō kia tatū.	Te mana o te reo	

Kāore i āhei te tiki atu te tapeke o ngā tirohanga whārangi i ngā pae tukutuku tawhito, nō reira karekau he tapeke mō te tau 2014/15 hei pūtakenga mō ngā matapae i ngā tau whai i muri ake.

## WĀHANGA TUARUA – TE TAUAKI KORONGA MŌ NGĀ MAHI KIA TUTUKI (Taha Pūtea)

Kāore anō i oti te arotake ngā whakaritenga pūtea e whakaaturia ana hei matapae mō te tau 2014/15 i tēnā, i tēnā o ngā tauaki pūtea matapae e whai ake nei (ko ngā upoko i ngā pou e rite ana e tohu ana i tēnei).

Kei raro Te Taura Whiri i te Reo Māori i te maru o te Minita Whanaketanga Māori.

### Te Tauaki Noho Haepapa


Ko ngā tauaki matapae e mau mai ana ki tēnei pūrongo mō Te Taura Whiri i te Reo Māori i te tau ka mutu ā te 30 o Pipiri 2016, he mea whakatakoto i runga i ngā whakahau a te wāhanga 142 o te Ture Hinonga Karauna 2004.

I te tānga o tana waitohu ki te tauaki nei, e whakaae ana te Kaiwhakahaere Ratonga Rangatōpū o Te Taura Whiri i te Reo Māori ko ia e noho haepapa ana mō ngā tauaki pūtea matapae e mau mai ana ki te pūrongo nei.

Ko te matapae taha pūtea kia ea i Te Taura Whiri i te Reo Māori mō te tau ka eke ā te 30 o Pipiri 2016, arā, ko tērā kei ngā Tauaki Pūtea Matapae, i whakaaetia tahitia me te Minita Whanaketanga Māori, ko ia nei hoki te Minita noho haepapa mō ngā tutukinga taha pūtea a Te Taura Whiri i te Reo Māori.

Waihoki, ko te eke o ngā mahi mō te wāhi ki ia kāhui tutukinga i matapaetia ka tutuki i Te Taura Whiri i te Reo Māori i te tau ka mutu ā te 30 o Pipiri 2016, arā, ko ērā i āta whakaaturia i te Tauaki Koronga mō ngā Mahi kia Tutuki, he mea whakaae ngātahi anō ki te Minita Whanaketanga Māori, ko ia nei hoki te Minita noho haepapa mō te Rohenga Pūtea e whakahaeretia ana e Te Taura Whiri i te Reo Māori.

E kī mārire ana mātou kei te hāngai ngā kōrero o roto i tēnei pūrongo ki ngā tāpuinga pūtea e mau mai ana ki ngā Whakatau Tata mō te tau ka eke ā te 30 o Pipiri 2016, ka tāpaea hoki ki te Whare Pāremata i raro i te wāhanga 13 o te Ture Pūtea Tūmatanui 1989.



Poia Rewi  
Tumuaki Kairiwhi  
24 Piripi 2015



Tuehu Harris  
Kaiwhakahaere Ratonga Rangatōpū  
24 Piripi 2015

## He kupu whakataki

Mō te tau ka mutu ā te 30 o Pipiri 2016, e whakaaro ana Te Taura Whiri i te Reo Māori ka tae mai i te Karauna:

- he \$9.501 miriona hei whakatairanga i te reo Māori i Aotearoa, ko tētahi \$6.317 miriona o tēnei hei kawē i a Mā te Reo, i He Kāinga Kōrerorero me te CBLI. Ko tā ēnei kaupapa, he āwhina i ngā iwi, i ngā hapū, i ngā whānau ki te whakapakari ake i te reo Māori i waenganui i a rātou.
- tētahi atu \$2.000 miriona hei kawē kaupapa rangahau, whakawhanake e hāpai ana i ngā mahi whakaora ake i te reo Māori

## Te tauaki whakapae tūāpapa tāpua

### *He hinonga tāpae pūrongo*

Koia ēnei ko ngā tauaki pūtea matapae a Te Taura Whiri i te Reo Māori, he hinonga mana motuhake nā te Karauna i whakatūria i raro i te Ture Reo Māori 1987.

Kei te Apa 2 o ngā hinonga painga tūmatanui a Te Taura Whiri i te Reo Māori, e ai ki ngā tohutohu mai a te Anga Paerewa Kaute a te Poari Pūrongo Mōwaho.

He mea whakarite ngā tauaki pūtea matapae i runga i ngā whakahau a te Wāhanga 142 o te Ture Hinonga Karauna 2004, e ū ana hoki ki ngā tikanga kaute e whakaaetia whānuitia ana, me ngā Tikanga Tāpae Pūrongo Pūtea o te Ao ki Aotearoa (NZ IFRS).

Ko te kaupapa o ēnei tauaki pūtea matapae, he āwhina i te whare pāremata ki te whiriwhiri i te pūtea Karauna ka tae mai ki Te Taura Whiri i te Reo Māori, me ngā mahi e tohua ana kia tutuki i a ia. Kua waihangatia i runga anō i te āhua o ngā kaupapa-here kāwanatanga, me te whakaaro iho kāore e puta kē ngā kawenga a Te Taura Whiri i te Reo Māori i ērā kua tohua mai i te Ture Reo Māori 1987.

Kāore pea he hāngaitanga o ngā tauaki nei ki tētahi kaupapa kē atu, atu i tērā kua huaina ake nei.

## Te tauaki kaupapa-here kaute tāpua

E ū ana ēnei tauaki pūtea matapae ki te Paerewa Pūrongo Pūtea Nama 42: Tauaki Pūtea Matapae (FRS-42) e tika ana mō ngā Hinonga Painga Tūmatanui (PBE).

### *Te pūnaha ine*

He mea whakarite ngā tauaki pūtea matapae i runga i te utu i te wā i hokona ai, ki te kore he kōrero kē atu. Ko ngā kaupapa-here kaute, he mea whakahāngai tautika ki ngā takiwā katoa e whakaaturia mai ana i ngā tauaki pūtea matapae.

He mea whakaatu ngā tauaki pūtea ki te moni o Aotearoa, ā, kua whakaāwhiwhitia ngā rahinga katoa ki te mano tāra tino tata.

Ko te moni ka whāwhātia e Te Taura Whiri i te Reo Māori, ko ngā tāra tonu o Aotearoa.



## **Ngā whiwhinga moni**

E whiwhi moni ana Te Taura Whiri i te Reo Māori i ngā mahi e tutuki ana i a ia mā te Karauna, i āna ratonga ki ētahi atu rōpū, me ngā huamoni i āna moni haumi. Ka whakaaturia ngā moni nei hei whiwhinga i te wā tonu e tika ana kia homai, ā, ka pūrongotia ki te tau pūtea e hāngai ana ki taua wā. He mea ine ngā moni whiwhi i runga i te wāriu tōkeke o te whakaaro ka horahia mai.

## **Ngā kaupapa-here kaute whāiti**

### **Ngā hua taha pūtea**

Ka uru mai ki te moni ukauka me ōna ritenga ngā moni kei te ringa, ngā moni whiti, ngā moni kei te pēke me ngā moni haumi e toru marama iti ake rānei te roa e eke ai te haumitanga.

He mea whakaatu ngā moni haumi ki te utu i hokona mai ai, ki te wāriu rānei me i hokona atu – ko te mea iti ake o rāua. Ki te whakaheke te wāriu, ka whakaaturia tēnei ki te Tauaki o ngā Whiwhinga Moni Whānui

Ka whakaaetia kua waimaero tētahi nama mai ina āta kitea e kore e riro mai i Te Taura Whiri i te Reo Māori ngā moni e tika ana i runga i ngā whakaritenga tuatahinga mō taua nama. Ko te nui o te waimaerotanga, ko te rerekētanga i waenga i te wāriu kawe o te hua me te wāriu me i hurihia hei moni ukauka.

### **Ngā hua taha rawa**

Koia ēnei ko ngā whakapaipaitanga whare, ngā waka, ngā taonga noho whare, ngā taputapu tari me ngā taputapu EDP. Ko te wāriu o ēnei ka tuhia tuatahitia, ko te utu i hokona mai ai.

Me he hua taha rawa i riro mai mō te kore noa iho, he tino iti rānei te utu i riro mai ai, ka whakaaturia tuatahitia ki tōna wāriu tōkeke, i te rā i riro mai ai.

### **Te hekenga wāriu**

He mea tātaitai te hekenga wāriu o ngā hua taha rawa i runga i te tikanga rārangi torotika, e tohaina ai te utu o tēnā, o tēnā ki te roanga o ngā tau e whakaaetia ana ka toiora a ia. Kia eke aua tau, kua noho wāriu kore taua mea. Anei ngā whakatau tata mō ngā tau e toiora ana tēnā me tēnā karangatanga rawa, me ngā pāpātanga whakaheke wāriu e hāngai ana ki tēnā, ki tēnā:

Whakapaipai Whare Rīhi	5 tau	20%
Taonga Noho Whare	5 tau	20%
Taputapu Tari	5 tau	20%
Taputapu Rorohiko	4 tau	25%
Pūmanawa Rorohiko	4 tau	25%

### **Ngā hua whakawairua**

Ko ngā pūmanawa rorohiko kāore e noho tāhuhu mai ki te whakahaeretanga o ngā rorohiko, ka whakaaturia hei hua whakawairua. Ka tuhia ko te utu i riro mai ai, i tika ai te mahi, ā, ko te āhua o te whakaurupā, he rārangi torotika ka whā tau e whāia ana. Ko ngā utu o te tiaki, o

te whakatika i ngā pūmanawa rorohiko, ka whakaaturia hei whakapaunga ā te wā e ara ake ai.

## **Ngā hanga whakanao pūtea**

He whakamahi tonu Te Taura Whiri i te Reo Māori i ētahi hanga whakanao pūtea i roto i āna mahi o ia rā. Koia ēnei, ko: ngā pūtea pēke, ngā nama mai, ngā nama atu, me ngā whakapipitanga. Ka whakaataria tēnei ki te Tauaki Tūnga Pūtea, ki te wariu tōkeke o tēnā, o tēnā.

Me he raweketanga pūtea ka mahia ki ngā moni o tāwāhi, ka whakawhitia i runga i ngā pāpātanga whakawhiti e hāngai ana ki tēnā, ki tēnā. Karekau ā Te Taura Whiri i te Reo Māori tahua i ngā moni o whenua kē.

## **Te tāke hokohoko**

Kua tuhia ngā Tauaki Pūtea me te kore e noho mai o te tāke hokohoko ki roto, hāunga anō ngā nama mai me ngā nama atu – e mau mai ana te tāke hokohoko ki ēnā.

## **Ngā paihere**

Ko ngā utu kei tua, ka whakaaturia hei paihere i te wā i ara ake ai te here kirimana, inā rā, e rua tahi, kāore anō i ea. Kāore e whākina ngā paihere mō te wāhi ki ngā kirimana kaimahi.

### ***Ngā rīhi***

Kei te rīhi Te Taura Whiri i te Reo Māori i tōna whare me ētahi o āna taputapu tari. I te mea kei te kaituku ngā mōreareatanga me te rangatiratanga o ēnei hanga rīhi, ka kīia ēnei he rīhi whakahaere. Ka tohua ngā utu rīhi whakahaere hei whakapaunga i te takiwā i ara ake ai.

### ***Te tāketanga***

Nā runga i te Wāhanga 15 o te Tāpiritanga Tuarua o Te Ture Reo Māori 1987, kei waho kē Te Taura Whiri i te Reo Māori i te ngau a te tāke moni whiwhi.

### ***Ngā tāpuitanga mō ngā whakawhiwhinga kaimahi***

Ka tuhia te whakatā ā-tau i runga i te maha o ngā rā e tika ana kia wātea ki te kaimahi i mea wā, i mea wā, ki te pāpātanga utu o nāiane.

### ***Te tauaki kapewhiti***

Ko te moni ukauka, ko ngā moni kei te ringa, kei te pēke, kei ngā pūtea tononoa, me ētahi atu moni haumi māma noa te tiki atu, he mea whakarite e Te Taura Whiri i te Reo Māori i āna mahi tiaki pūtea o ia rā.

Ko ngā mahi whakahaere, ko ngā mahi katoa atu i ngā mahi haumi me ngā mahi toha pūtea. Ko ngā moni mai, ko ngā moni ka tae mai i te hokonga atu o te taonga, o te ratonga, me ērā atu puna moni e tautoko ana i ngā mahi whakahaere a Te Taura Whiri i te Reo Māori. Ko ngā moni atu, ko ngā utu kaimahi, utu kaituku taonga mai, ratonga mai, me ngā tāke.

Ko ngā mahi haumi, ko ērā e riro mai ai, e riro atu ai rānei ngā oati utu e wātea ana me ērā kāore i wātea, tae atu ki ērā atu hua kāore i wātea.

Ko ngā mahi takapūtea, ko ērā e rerekē ai te tūtanga me te hanga haupū rawa-nama o Te Taura Whiri i te Reo Māori, tae atu ki ngā mahi e pā ana ki te utu o te whakaea i te haupū rawa tūtanga a Te Taura Whiri i te Reo Māori.

## **Te tohanga utu**

Kua oti i Te Taura Whiri i te Reo Māori te utu o ngā tutukinga te whakatau i runga anō i te pūnaha toha utu i raro iho nei.

### ***Te paearu mō ngā utu arorangi***

Ko ngā utu arorangi, ko ngā utu i hua katoa ake i te tutukinga kotahi.

### ***Te paearu mō ngā utu kāore i arorangi***

Ko ngā utu kāore i arorangi me ngā utu tukupū rangatōpū, ko ngā utu kāore e taea te pare atu, i runga i tētahi tikanga ohaoha whai takenga nei, ki te tutukinga kotahi. Ka tohua kētia ki ngā tutukinga i runga i te ōrau o ngā tūnga wā-poha (ngā FTE) kei tēnā, kei tēnā tutukinga.

### ***Ngā whakarerekētanga ki ngā kaupapa-here kaute***

Katoa ngā moni whiwhi, ahakoa ahu mai i hea, ahakoa pau atu ki hea, kua kuhuna ki ngā tauaki pūtea matapae. He rerekē tēnei i te mahi i ngā tau o mua atu, i kīia ai ētahi o ngā moni whiwhi he tahua nā te pūtahi.

## Ngā tauaki pūtea

### *Te tauaki matapae o ngā whiwhinga moni whānui*

Mō te tau ka eke ā te 30 Pipiri 2016

	2014/15 I whakaritea \$	2014/15 Tūturu - whakatau tata \$	2015/16 Matapae \$
<b>NGĀ WHIWHINGA</b>			
<b>Moni whakahaere mai i te Karauna</b>			
Pūtea Whakahaere	3,204,000	3,204,000	3,204,000
Mā Te Reo – Aroturuki, Arotake	250,000	250,000	250,000
Mahi Rangahau, Whakawhanake	2,000,000	2,000,000	2,000,000
Community-Based Language Initiatives	1,460,960	1,460,960	1,480,960
<b>Te Katoa o ngā Moni Whakahaere mai i te Karauna</b>	<b>6,914,960</b>	<b>6,914,960</b>	<b>6,934,960</b>
<b>Moni Tohatoha mai i te Karauna</b>			
Mā Te Reo	2,250,000	2,250,000	2,250,000
He Kāinga Kōrerorero	1,500,000	1,500,000	1,500,000
CBLI - Te Kura Whānau Reo	836,040	836,040	836,040
<b>Te Katoa o ngā Moni Tohatoha mai i te Karauna</b>	<b>4,586,040</b>	<b>4,586,040</b>	<b>4,586,040</b>
<b>Moni mai i ngā Mahi Pena Pūtea</b>			
Whiwhinga Huamoni	125,000	350,303	350,303
Ētahi atu Whiwhinga	120,000	166,764	166,764
<b>Te Katoa o ngā Moni mai i ngā Mahi Pena Pūtea</b>	<b>245,000</b>	<b>517,067</b>	<b>517,067</b>
<b>Te Katoa o ngā Whiwhinga</b>	<b>11,746,000</b>	<b>12,018,067</b>	<b>12,038,067</b>
<b>NGĀ WHAKAPAUNGA</b>			
<b>Ngā whakapaunga taha whakahaere</b>			
Whakaurupātanga	37,879	12,744	17,744
Hekenga wāriu	75,461	45,126	63,418
Whakapaunga taha whakahaere TTWh	1,508,265	1,890,232	1,796,432
Whakapaunga taha whakahaere CBLI	2,084,727	304,474	3,280,095
Whakapaunga taha whakahaere R&D	3,102,068	1,598,770	1,574,064
Whakapaunga taha tangata TTWh	2,007,154	1,975,075	2,190,817
Whakapaunga taha tangata CBLI	55,000	10,587	130,800
Whakapaunga taha tangata R&D	198,225	181,938	354,250
<b>Te Katoa o ngā Whakapaunga Taha Whakahaere</b>	<b>9,068,779</b>	<b>6,018,946</b>	<b>9,407,619</b>
<b>Ngā Whakapaunga Taha Kirimana (more)</b>			
Mā Te Reo	2,300,000	3,250,000	2,250,000
He Kāinga Kōrerorero	1,500,000	1,500,000	1,500,000
CBLI - Te Kura Whānau Reo	836,040	836,040	836,040
<b>Te Katoa o ngā Whakapaunga Taha Kirimana</b>	<b>4,636,040</b>	<b>5,586,040</b>	<b>4,586,040</b>
<b>Te Katoa o ngā Whakapaunga</b>	<b>13,704,819</b>	<b>11,604,986</b>	<b>13,993,659</b>

<b>Te Hemihemi/(Tarepa)</b>			
Te Hemihemi Taha Whakahaere	(\$1,908,819)	1,413,081	(\$1,955,592)
Te Hemihemi Taha Kirimana	(\$50,000)	(\$1,000,000)	\$0
<b>Te Katoa o te Hemihemi/(Tarepa)</b>	<b>(\$1,958,819)</b>	<b>413,081</b>	<b>(\$1,955,592)</b>

He wāhanga taketake tonu nō ēnei tauaki pūtea ngā kaupapa-here kaute me ngā whakamārama mō ngā tauaki pūtea e mau atu nei.

DRAFT

## Te tauaki matapae mō te tūnga pūtea

Ā te 30 Pipiri 2016

	2014/15 I whakaritea \$	2014/15 Tūturu - whakatau tata \$	2015/16 Matapae \$
<b>NGĀ HUA</b>			
<b>NGĀ HUA WĀTEA</b>			
Moni ukauka me ōna ritenga	5,152,800	7,700,222	7,726,917
Tāngata noho nama mai me ētahi atu noho nama mai	75,000	60,000	75,000
Pūtea Haumi o Mā te Reo	4,769,800	4,035,000	4,355,000
Utu tōmua	-	-	-
Tāke hokohoko kia utua mai	-	-	-
<b>Te Katoa o ngā Hua Wātea</b>	<b>9,997,600</b>	<b>11,795,222</b>	<b>12,156,917</b>
<b>NGĀ HUA HE HERE KEI RUNGA</b>			
Pūtea Haumi o Mā te Reo	100,000	150,000	-
Whare, rawa, taputapu	129,930	59,272	145,854
Hua whakawairua	497,891	16,935	99,191
<b>Te Katoa o ngā Hua he Here kei Runga</b>	<b>727,821</b>	<b>226,207</b>	<b>245,045</b>
<b>TE KATOA O NGĀ HUA</b>	<b>10,725,421</b>	<b>12,021,429</b>	<b>12,401,962</b>
<b>NGĀ TAUNAHATANGA</b>			
<b>NGĀ TAUNAHATANGA O TĒNEI WĀ</b>			
Kaituku nama me ētahi atu nama kia utua	3,484,663	3,646,444	4,250,058
Pūtea Haumi o Mā te Reo	900,000	220,000	900,000
Tāke hokohoko kia utua atu	-	496,000	-
Whakawhiwhinga kaimahi	240,000	-	240,000
<b>Te Katoa o ngā Taunahatanga o Tēnei Wā</b>	<b>4,624,663</b>	<b>4,362,444</b>	<b>5,390,058</b>
<b>NGĀ TAUNAHATANGA KEI TUA</b>			
Pūtea Haumi o Mā te Reo	3,969,800	3,689,000	3,455,000
Whakawhiwhinga kaimahi	12,000	12,000	12,000
<b>Ngā Taunahatanga kei Tua</b>	<b>3,981,800</b>	<b>3,701,000</b>	<b>3,467,000</b>
<b>TE KATOA O NGĀ TAUNAHATANGA</b>	<b>8,606,463</b>	<b>8,063,444</b>	<b>8,857,058</b>
<b>HUA MORE</b>	<b>2,118,958</b>	<b>3,957,985</b>	<b>3,544,904</b>
<b>TŪTANGA KARAUNA</b>			
Kua kawea mai	4,077,778	3,544,904	3,957,985
<b>Te Katoa o ngā Whiwhinga mō te Tau</b>	<b>(\$1,958,819)</b>	<b>413,081</b>	<b>(\$1,955,592)</b>
<b>Te Katoa o te Tūtanga Karauna</b>	<b>2,118,959</b>	<b>3,957,985</b>	<b>3,544,904</b>

He wāhanga taketake tonu nō ēnei tauaki pūtea ngā kaupapa-here kaute me ngā whakamārama mō ngā tauaki pūtea e mau atu nei.

### ***Te tauaki nekeneke tūtanga***

Mō te tau ka eke ā te 30 Pipiri 2016

	2014/15 I whakaritea \$	2014/15 Tūturu - whakatau tata \$	2015/16 Matapae \$
<b>Te Tūtanga Karauna i te 1 o Hōngongoi</b>	4,077,778	3,544,904	3,957,984
Whiwhinga Moni Whānui Hemihemi	(\$1,958,819)	413,081	(\$1,955,592)
<b>Whiwhinga Moni Whānui</b>	<b>(\$1,958,819)</b>	<b>413,081</b>	<b>(\$1,955,592)</b>
<b>Te Katoa o te Tūtanga karauna i te 30 o Pipiri</b>	<b>2,118,959</b>	<b>3,957,985</b>	<b>2,002,392</b>

He wāhanga taketake tonu nō ēnei tauaki pūtea ngā kaupapa-here kaute me ngā whakamārama mō ngā tauaki pūtea e mau atu nei.

DRAFT

## Te tauaki kapewhiti

Mō te tau ka eke ā te 30 Pipiri 2016

	2014/15 I whakaritea \$	2014/15 Tūturu – whakatau tata \$	2015/16 Matapae \$
<b>KAPEWHITI O ROTO I NGĀ MAHI WHAKAHAERE</b>			
I tae mai he moni i (i whakapaua ki) te:			
WhiwHINGA mai i te Karauna	11,501,000	11,501,000	11,521,000
WhiwHINGA huamoni	125,000	350,303	350,303
WhiwHINGA i wāhi kē	142,934	366,227	153,721
Utu ratonga, utu taonga	(\$8,678,431)	(\$6,547,892)	(\$9,889,625)
Utu kaimahi	(\$2,235,379)	(\$2,365,259)	(\$2,435,867)
Utu tāke hokohoko	518,665	56,307	496,000
<b>Kapewhiti more o roto i ngā mahi whakahaere</b>	<b>1,373,789</b>	<b>3,360,686</b>	<b>195,532</b>
<b>KAPEWHITI O ROTO I NGĀ MAHI HAUMI</b>			
I tae mai he moni i (i whakapaua ki) te:			
Hokonga atu o te whare, te rawa, te taputapu	-	-	-
Hokonga mai o te whare, te rawa, te taputapu	(\$617,500)	(\$56,975)	(\$168,838)
Hokonga mai o te hua whakawairua	-	-	-
<b>Kapewhiti more o roto i ngā mahi haumi</b>	<b>(\$617,500)</b>	<b>(\$56,975)</b>	<b>(\$168,838)</b>
<b>KAPEWHITI O ROTO I NGĀ MAHI TAKAPŪTEA</b>			
I tae mai he moni i (i whakapaua ki) te:			
Rourou rawa	-	-	-
Pūtea Haumi o Mā Te Reo	-	-	-
<b>Kapewhiti more o roto i ngā mahi takapūtea</b>			
Te (hekenga)/ pikinga more o te moni ukauka me ōna ritenga	756,289	3,303,711	26,694
Te moni ukauka me ōna ritenga i te tīmatanga o te tau	4,396,511	4,396,511	7,700,222
Te moni ukauka me ōna ritenga i te mutunga o te tau	5,152,800	-	-
<b>E tohua ana e: te moni ukauka me ōna ritenga</b>	<b>5,152,800</b>	<b>7,700,222</b>	<b>7,726,916</b>

He wāhanga taketake tonu nō ēnei tauaki pūtea ngā kaupapa-here kaute me ngā whakamārama mō ngā tauaki pūtea e mau atu nei.